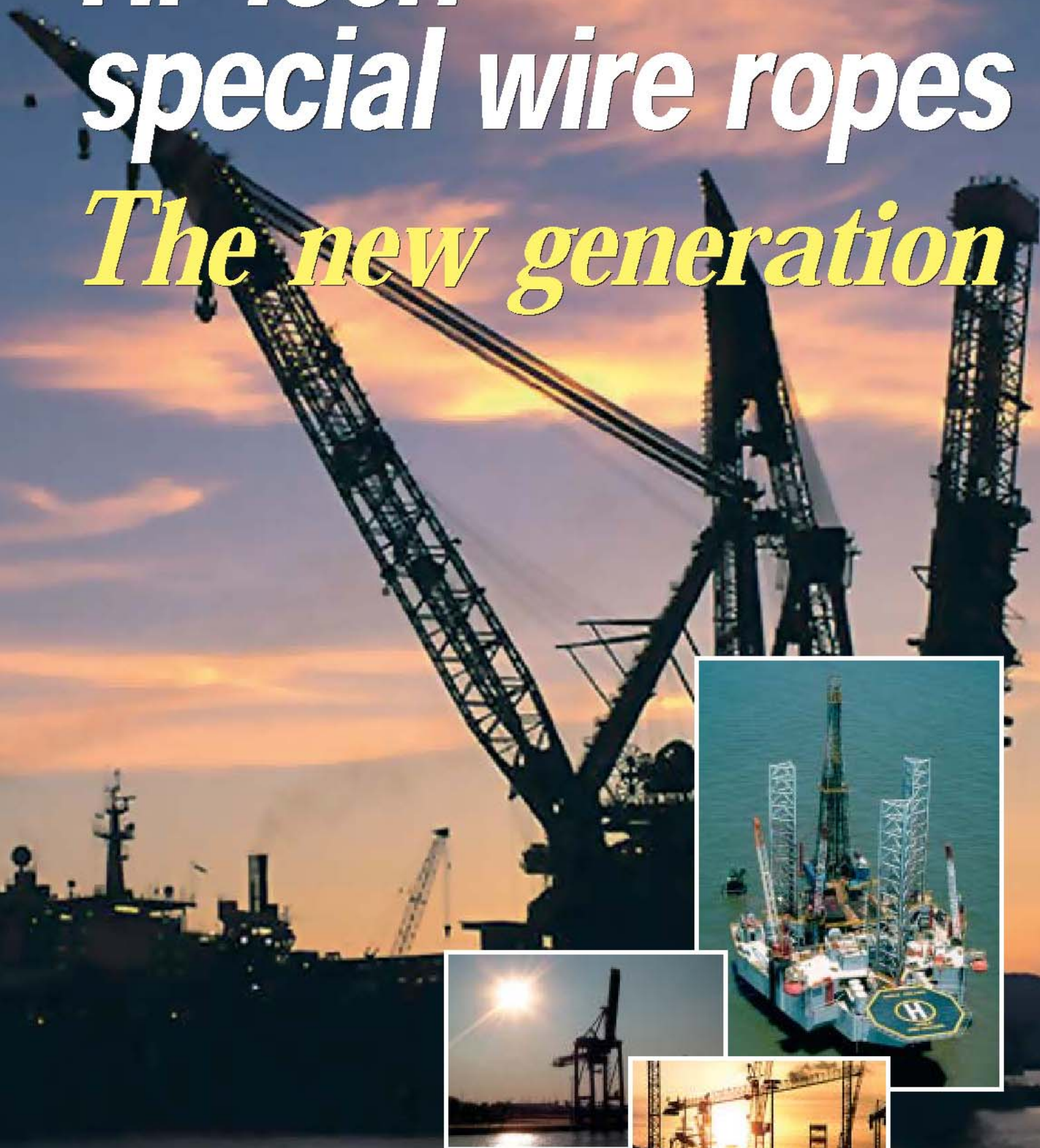


Hi-Tech special wire ropes

The new generation



Special 6-strand ropes

Redaelli *tecna*

Redaelli hi-tech wire ropes are known throughout the entire world for their top quality and performance in service.

Redaelli since the second half of the 19th Century promoted the development of special wire ropes for the more demanding applications. Today Redaelli is the undisputed leader in the Italian market, a highly reputed worldwide exporter and a unique reference point in some specific fields.

With this background, with continued investments in upgrading the production facilities and processes, with a deep commitment to technical development, Redaelli is now recognised as one of the few leading companies in the production of specialised ropes for today's modern equipment.

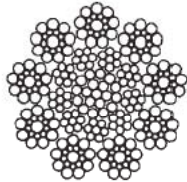
Redaelli rope is guarantee of a quality product manufactured in a factory Quality Assured in accordance to ISO 9001:2000.



Ø mm	Red1			Pack1			Pack1T			Red1TR		
	Mass kg/m	Min. breaking force		Mass kg/m	Min. breaking force		Mass kg/m	Min. breaking force		Mass kg/m	Min. breaking force	
		Bright kN	Galv. kN		Bright kN	Galv. kN		Bright kN	Galv. kN		Bright kN	Galv. kN
6	0.15	29.4	29.4									
7	0.21	40.0	40.0									
8	0.27	52.2	52.2									
9	0.34	66.1	66.1									
10	0.42	84.4	84.4	0.45	91.1	91.1	0.39	73.2	73.2			
11	0.51	102	102	0.54	110	110	0.47	88.6	88.6			
12	0.60	122	122	0.65	131	131	0.56	105	105			
13	0.71	143	143	0.76	154	154	0.66	124	124			
14	0.82	165	165	0.88	179	179	0.76	143	143			
15	0.95	190	190	1.01	205	205	0.88	165	165			
16	1.08	216	216	1.15	233	233	1.00	187	187	1.03	159	159
17	1.21	244	244	1.30	263	263	1.13	212	212	1.16	179	179
18	1.36	273	273	1.46	295	295	1.26	237	237	1.31	201	201
19	1.52	305	305	1.62	329	329	1.41	264	264	1.45	224	224
20	1.68	338	338	1.80	364	364	1.56	293	293	1.61	248	248
22	2.03	408	408	2.18	441	441	1.89	354	354	1.95	300	300
24	2.42	486	486	2.59	525	525	2.25	422	422	2.32	357	357
26	2.84	571	571	3.04	616	616	2.64	495	495	2.72	419	419
28	3.29	662	629	3.53	698	663	3.08	574	560	3.16	486	486
30	3.78	760	722	4.05	801	761	3.51	659	642	3.63	558	558
32	4.30	864	821	4.61	911	866	3.99	750	731	4.13	635	635
34	4.86	954	906	5.20	1030	977	4.51	846	825	4.66	717	717
36	5.44	1070	1020	5.83	1150	1100	5.05	949	925	5.22	804	804
38	6.06	1190	1130	6.50	1290	1220	5.63	1060	1030	5.82	895	895
40	6.72	1320	1250	7.20	1420	1350	6.24	1170	1140	6.45	992	992
42	7.41	1430	1360	7.94	1530	1430	6.88	1290	1230			
44	8.13	1570	1490	8.71	1680	1570	7.55	1420	1350			
46	8.89	1710	1630	9.52	1840	1710	8.25	1550	1470			
48	9.68	1870	1770	10.4	2000	1860	8.99	1690	1600			
50	10.5	2030	1920	11.3	2180	2020	9.75	1830	1740			
52	11.4	2190	2080	12.2	2350	2190	10.5	1980	1880			
54	12.2	2250	2090	13.1	2540	2360	11.4	2130	2030			
56	13.2	2410	2250	14.1	2730	2540	12.2	2300	2180			
58	14.1	2590	2410	15.1	2930	2720	13.1	2460	2340			
60	15.1	2770	2580	16.2	3130	2910	14.0	2640	2500			
62	16.1	2960	2750	17.3	3340	3110	15.0	2810	2670			
64	17.2	3150	2930	18.4	3560	3310	16.0	3000	2850			
66	18.3	3350	3120	19.6	3790	3520						
68	19.4	3560	3310	20.8	4020	3740						
70	20.6	3770	3510	22.1	4260	3960						
72	21.8	3990	3710	23.3	4510	4190						
74	23.0	4220	3920	24.6	4760	4430						
76	24.3	4450	4140	26.0	5030	4670						

Redaelli tecna

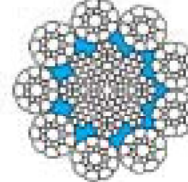
Red2



Spin9P

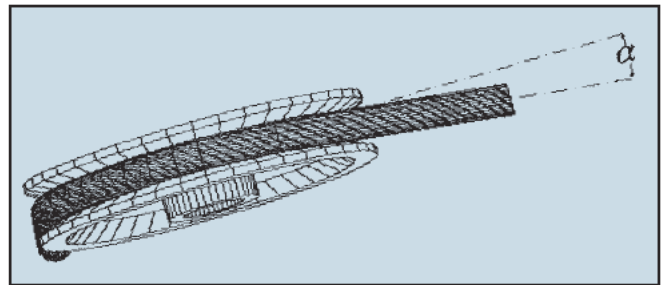


Spin9KP



Ø mm	Mass kg/m	Min. breaking force		Mass kg/m	MBF Class 2160 Bright & Galv. kN	Mass kg/m	MBF Class 1960 Bright & Galv. kN	Mass kg/m	MBF Class 2160 Bright & Galv. kN
		Bright kN	Galv. kN						
6	0.16	34.7	34.7						
7	0.21	47.2	47.2						
8	0.28	61.6	61.6	0.27	58.9	0.30	62.7	0.32	65.3
9	0.35	78.0	78.0	0.34	74.5	0.39	79.4	0.40	82.6
10	0.44	96.3	96.3	0.42	92.0	0.48	98.0	0.50	102
11	0.53	117	117	0.51	111	0.58	119	0.60	123
12	0.63	139	139	0.60	132	0.69	141	0.71	147
13	0.79	165	156	0.73	155	0.80	166	0.84	172
14	0.92	191	181	0.84	180	0.93	192	0.97	200
15	1.08	219	208	0.97	207	1.07	221	1.11	230
16	1.20	249	237	1.10	236	1.22	251	1.27	261
17	1.36	281	267	1.24	266	1.38	283	1.43	295
18	1.52	316	300	1.39	298	1.54	318	1.60	330
19	1.70	352	334	1.55	332	1.72	354	1.79	368
20	1.88	390	370	1.72	368	1.90	392	1.98	408
22	2.27	471	448	2.08	445	2.30	474	2.40	494
24	2.71	561	533	2.48	530	2.74	564	2.85	588
26	3.21	654	654	2.91	622	3.22	662	3.35	690
28	3.72	759	759	3.37	721	3.73	768	3.88	800
30	4.28	871	871	3.87	828	4.28	882	4.46	918
32	4.86	991	942	4.40	942	4.87	1000	5.07	1040
34	5.49	1120	1060	4.97	1060	5.50	1130	5.72	1180
36	6.16	1250	1190	5.57	1190	6.17	1270	6.42	1320
38	6.86	1400	1330	6.21	1330	6.87	1420	7.15	1470
40	7.60	1550	1470	6.88	1470	7.62	1570	7.92	1630
42	8.68	1760	1680	7.83	1620	8.01	1710	8.73	1800
44	9.53	1940	1840	8.60	1780	8.79	1880	9.58	1970
46	10.4	2030	1930	9.40	1950	9.61	2050	10.5	2160
48	11.3	2210	2100	10.2	2120	10.5	2230	11.4	2350
50	12.3	2400	2280	11.1	2300	11.4	2430	12.4	2550
52	13.3	2600	2470	12.0	2490	12.3	2620	13.4	2760
54	14.3	2770	2580	13.0	2680	13.2	2830	14.4	2970
56	15.4	2980	2770	13.9	2890	14.2	3040	15.5	3200
58	16.6	3200	2970	14.9	3090	15.3	3260	16.7	3430
60	17.7	3420	3180	16.0	3310	16.3	3490	17.8	3670
62	18.9	3610	3360	17.1	3500	17.5	3690		
64	20.2	3850	3580	18.2	3730	18.6	3930		
66	21.4	4090	3810	19.3	3930	19.8	4180		
68	22.8	4300	4000	20.5	4170	21.0	4440		
70	24.1	4560	4240	21.8	4420	22.3	4700		
72	25.5	4820	4480	23.0	4620	23.5	4980		
74				24.3	4880	24.9	5260		
76				25.7	5150	26.2	5540		

Rope behaviour in presence of fleet angle

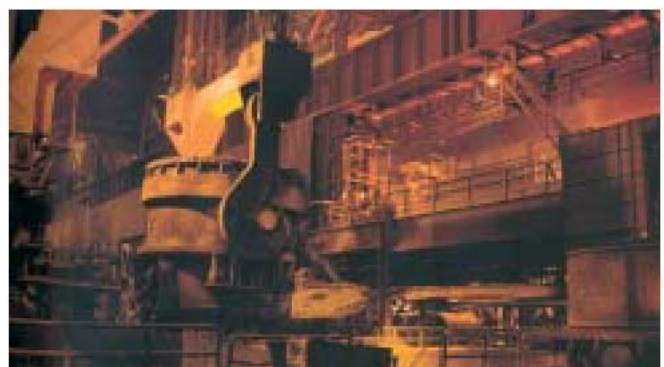
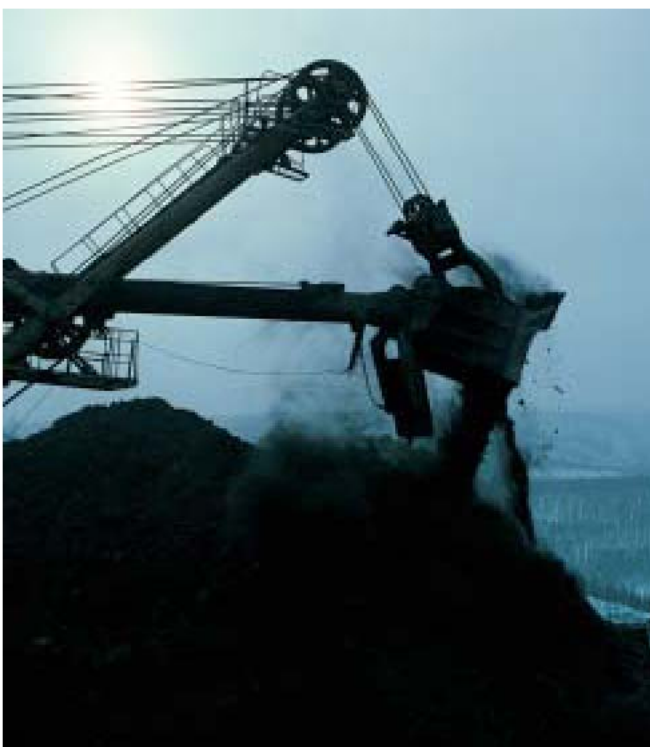


Category	Type	Fleet angle α [°]																				
		0.25	0.50	0.75	1.00	1.25	1.50	1.75	2.00	2.25	2.50	2.75	3.00	3.25	3.50	3.75	4.00	4.25	4.50	4.75	5.00	
Special hoisting	Pack1T	Allowed	Allowed	Allowed	Allowed	Allowed	Allowed	Allowed	Allowed	Allowed	Allowed	Allowed	Allowed	Allowed	Allowed	Allowed	Allowed	Allowed	Allowed	Allowed	Allowed	Allowed
	Spin9P	Allowed	Allowed	Allowed	Allowed	Allowed	Allowed	Allowed	Allowed	Allowed	Allowed	Allowed	Allowed	Allowed	Allowed	Allowed	Allowed	Allowed	Allowed	Allowed	Allowed	Allowed
	Spin9KP	Allowed	Allowed	Allowed	Allowed	Allowed	Allowed	Allowed	Allowed	Allowed	Allowed	Allowed	Allowed	Allowed	Allowed	Allowed	Allowed	Allowed	Allowed	Allowed	Allowed	Allowed
	Red1TR	Allowed	Allowed	Allowed	Allowed	Allowed	Allowed	Allowed	Allowed	Allowed	Allowed	Allowed	Allowed	Allowed	Allowed	Allowed	Allowed	Allowed	Allowed	Allowed	Allowed	Allowed
	Pack1	Allowed	Allowed	Allowed	Allowed	Allowed	Allowed	Allowed	Allowed	Allowed	Allowed	Allowed	Allowed	Allowed	Allowed	Allowed	Allowed	Allowed	Allowed	Allowed	Allowed	Allowed
	Red1	Allowed	Allowed	Allowed	Allowed	Allowed	Allowed	Allowed	Allowed	Allowed	Allowed	Allowed	Allowed	Allowed	Allowed	Allowed	Allowed	Allowed	Allowed	Allowed	Allowed	Allowed
	Red2	Allowed	Allowed	Allowed	Allowed	Allowed	Allowed	Allowed	Allowed	Allowed	Allowed	Allowed	Allowed	Allowed	Allowed	Allowed	Allowed	Allowed	Allowed	Allowed	Allowed	Allowed
Non rotating	Iperplast	Allowed	Allowed	Allowed	Allowed	Allowed	Allowed	Allowed	Allowed	Allowed	Allowed	Allowed	Allowed	Allowed	Allowed	Allowed	Allowed	Allowed	Allowed	Allowed	Allowed	Allowed
	Flexpack < 34	Allowed	Allowed	Allowed	Allowed	Allowed	Allowed	Allowed	Allowed	Allowed	Allowed	Allowed	Allowed	Allowed	Allowed	Allowed	Allowed	Allowed	Allowed	Allowed	Allowed	Allowed
	Iperpack	Allowed	Allowed	Allowed	Allowed	Allowed	Allowed	Allowed	Allowed	Allowed	Allowed	Allowed	Allowed	Allowed	Allowed	Allowed	Allowed	Allowed	Allowed	Allowed	Allowed	Allowed
	Iperflex < 34	Allowed	Allowed	Allowed	Allowed	Allowed	Allowed	Allowed	Allowed	Allowed	Allowed	Allowed	Allowed	Allowed	Allowed	Allowed	Allowed	Allowed	Allowed	Allowed	Allowed	Allowed
	Pack361	Allowed	Allowed	Allowed	Allowed	Allowed	Allowed	Allowed	Allowed	Allowed	Allowed	Allowed	Allowed	Allowed	Allowed	Allowed	Allowed	Allowed	Allowed	Allowed	Allowed	Allowed
	Flexpack > 34	Allowed	Allowed	Allowed	Allowed	Allowed	Allowed	Allowed	Allowed	Allowed	Allowed	Allowed	Allowed	Allowed	Allowed	Allowed	Allowed	Allowed	Allowed	Allowed	Allowed	Allowed
	Iperflex > 34	Allowed	Allowed	Allowed	Allowed	Allowed	Allowed	Allowed	Allowed	Allowed	Allowed	Allowed	Allowed	Allowed	Allowed	Allowed	Allowed	Allowed	Allowed	Allowed	Allowed	Allowed

Allowed

Uncertain results

Not allowed





Redaelli *tecna*

**Te
N
So**

Tenso Cables, S.A.
A96690029
Ctra. BP-2151, km 18
08776 - Sant Pere de Riudebitlles
(Barcelona)
+34 93 899 62 10 - 902 12 07 13
+34 93 899 62 09
info@tenso.es
<http://www.tenso.es>